

Humanized Monoclonal Antibodies

— Reliable Serum-Based Calibrators and Positive Controls for Diagnostic Assay Development

A critical decision in diagnostic assay development is the source of controls and/or calibrator materials and their standardization. Calibrators are used to generate standard curves to quantify test antibody concentrations in patient serum, or as positive controls to evaluate assay and reagent performance. The classical choice for controls and calibrators is seropositive serum or plasma.

However, there are known drawbacks to using sera or plasma for standardized assays, making recombinant chimeric/humanized antibodies a more reliable alternative to serum-based calibrators. The chimeric/humanized antibodies consist of the human constant region of the heavy chain, the mouse variable region of the heavy chain, and the mouse light chain. The human constant region of the heavy chain can be directly recognized by the anti-human conjugate used in numerous in vitro diagnostic assays.

Creative Diagnostics now offers a full set of humanized monoclonal antibodies (IgM, IgG, IgE or IgA) as calibrators, positives, or quality controls for assay development and diagnostic kit manufacturing to life science researchers worldwide. Applications range from allergy, auto-immunity to infectious diseases.

Features and Benefits

- High affinity and specificity with a minimum shelf life of 2 years
- Industrial batch sizes
- Minimal lot to lot variation
- Continuous availability

Product List

Targets	Product Name	Antibody Isotype	Catalogue Number
---------	--------------	------------------	------------------

Autoimmune Disease Antibodies

CCP	Human Anti-Human CCP	IgG	CABT-L6001
	Human Anti-Human CCP	IgG	CABT-L6002
GAD65	Human Anti-Human GAD65	IgG	CABT-L6004
dsDNA	Human Anti-dsDNA	IgG	CABT-L6005
ACA	Human Anti-Human ACA	IgG	CABT-L6121
Insulin	Human Anti-Human Insulin	IgG	CABT-L6007
MCV	Human Anti-Human MCV (mutated citrullinated vimentin)	IgG	CABT-L6006
C1q	Human Anti-Human C1q	IgG	CABT-L6122
PDC-E2	Human Anti-Human PDC-E2	IgG1, κ	CABT-Z517H
SLA/LP	Human Anti-Human SLA/LP	IgG1, κ	CABT-Z519H
LKM-1	Human Anti-Human LKM-1	IgG	CABT-L2414
SRP54	Human Anti-Human SRP54	IgG	CABT-L2415
SP100	Human Anti-Human SP100	IgG	CABT-L2418
	Human Anti-Human SP100	IgG	CABT-L2419
threonyl-tRNA synthetase PL-7	Human Anti-Human threonyl-tRNA synthetase PL-7	IgG	CABT-L2421
	Human Anti-Human threonyl-tRNA synthetase PL-7	IgG	CABT-L2422
PCNA	Human Anti-Human PCNA	IgG	CABT-L2423
Mi-2	Human Anti-Human Mi-2	IgG	CABT-L2424
Proteinase-3	Human Anti Human proteinase-3	IgG	CABT-L6003
PL-12	Human Anti-Human PL-12	IgG1, κ	CABT-L7787

Human Infectious Diseases Antibodies

SARS-CoV-2	Human Anti-SARS-CoV-2 S1	IgG	CABT-CS033
	Human Anti-SARS-CoV-2 Nucleoprotein	IgG	CABT-CS037
	Human Anti-SARS-CoV-2 S-RBD	IgM	CABT-CS044
	Human Anti-SARS-CoV-2 Nucleoprotein	IgM	CABT-CS061

Product List

Targets	Product Name	Antibody Isotype	Catalogue Number
SARS-CoV-2	Human Anti-SARS-CoV-2 N+S-RBD	IgG, IgM	CABT-CS067
	Human Anti-SARS-CoV-2 S-RBD	IgA	CABT-CS088
MPXV	Human Anti-MPXV A29L	IgG	CABT-CS683
	Human Anti-MPXV A29L	IgM	CABT-CS684
	Human Anti-MPXV M1R	IgG	CABT-NS1653
	Human Anti-MPXV M1R	IgM	CABT-NS1654
	Human Anti-MPXV A35L	IgG	CABT-NS1655
	Human Anti-MPXV A35L	IgM	CABT-NS1656
	EV71	Human Anti-EV71 VP	IgG
Human Anti-EV71 VP		IgM	CABT-NS1545
ZIKV	Human Anti-Zika Virus NS1	IgG	CABT-NS1607
	Human Anti-Zika Virus NS1	IgM	CABT-NS1608
CHIKV	Human Anti-CHIKV E1	IgG	CABT-NS1603
	Human Anti-CHIKV E1	IgM	CABT-NS1604
	Human Anti-CHIKV E2	IgG	CABT-NS1605
	Human Anti-CHIKV E2	IgM	CABT-NS1606
Coxsackie virus	Human Anti-Coxsackievirus A6	IgG	CABT-NS1599
	Human Anti-Coxsackievirus A6	IgM	CABT-NS1600
	Human Anti-Coxsackievirus A16 VLP	IgG	CABT-NS1601
	Human Anti-Coxsackievirus A16 VLP	IgM	CABT-NS1602
ADV	Human Anti-ADV-5 Capsid	IgG	CABT-NS1546
	Human Anti-ADV-5 Capsid	IgM	CABT-NS1547
PIV	Human Anti-PIV 3 F protein	IgG	CABT-NS1548
	Human Anti-PIV 3 F protein	IgM	CABT-NS1549
RSV	Human Anti-RSV F protein	IgG	CABT-NS1552
	Human Anti-RSV F protein	IgM	CABT-NS1553

Product List

Targets	Product Name	Antibody Isotype	Catalogue Number
HBV	Human Anti-HBeAg	IgG	CABT-NS1561
	Human Anti-HBcAg	IgG	CABT-NS1562
	Human Anti-HBcAg	IgM	CABT-NS1563
	Human Anti-HBsAg	IgG	CABT-NS1564
HAV	Human Anti-HAV VP	IgG	CABT-NS1559
	Human Anti-HAV VP	IgM	CABT-NS1560
HEV	Human Anti-HEV Spike Protein	IgG	CABT-NS1569
	Human Anti-HEV Spike Protein	IgM	CABT-NS1570
HCV	Human Anti-HCV Core Protein	IgG	CABT-NS1565
	Human Anti-HCV Core Protein	IgM	CABT-NS1566
	Human Anti-HCV NS3	IgG	CABT-NS1567
	Human Anti-HCV NS3	IgM	CABT-NS1568
HIV	Human Anti-HIV-1 gp41	IgG	CABT-NS1571
	Human Anti-HIV-1 gp41	IgM	CABT-NS1572
	Human Anti-HIV-1 gp120	IgG	CABT-NS1573
	Human Anti-HIV-1 gp120	IgM	CABT-NS1574
HSV-1	Human Anti-HSV-1 gD	IgG	CABT-NS1575
	Human Anti-HSV-1 gD	IgM	CABT-NS1576
	Human Anti-HSV-1 gB	IgG	CABT-NS1577
	Human Anti-HSV-1 gB	IgM	CABT-NS1578
HSV-2	Human Anti-HSV-2 gD	IgG	CABT-NS1579
	Human Anti-HSV-2 gD	IgM	CABT-NS1580
	Human Anti-HSV-2 gB	IgG	CABT-NS1581
	Human Anti-HSV-2 gB	IgM	CABT-NS1582
CMV	Human Anti-CMV gB	IgG	CABT-NS1583
	Human Anti-CMV gB	IgM	CABT-NS1584

Product List

Targets	Product Name	Antibody Isotype	Catalogue Number
CMV	Human Anti-CMV gH/gL	IgG	CABT-NS1585
	Human Anti-CMV gH/gL	IgM	CABT-NS1586
C. pneumoniae	Human Anti-C. pneumoniae LPS	IgG	CABT-NS1614
	Human Anti-C. pneumoniae LPS	IgM	CABT-NS1615
C. trachomatis	Human Anti-C. trachomatis LPS	IgG	CABT-NS1616
	Human Anti-C. trachomatis LPS	IgM	CABT-NS1617
VZV	Human Anti-VZV gH/gL	IgG	CABT-NS1595
	Human Anti-VZV gH/gL	IgM	CABT-NS1596
	Human Anti-VZV gB	IgG	CABT-NS1650
	Human Anti-VZV gB	IgM	CABT-NS1651
M. tuberculosis LAM	Human Anti-M. tuberculosis LAM	IgG	CABT-NS1610
	Human Anti-M. tuberculosis LAM	IgM	CABT-NS1611
DENV	Human Anti-DENV NS1(pan-specific)	IgG	CABT-NS1609
Borrelia burgdorferi	Human Anti-Borrelia burgdorferi OspA	IgG	CABT-NS1597
	Human Anti-Borrelia burgdorferi OspA	IgM	CABT-NS1598
IAV	Human Anti-IAV HA	IgM	CABT-NS1543
	Human Anti-IAV HA	IgG	CABT-NS1554
IBV	Human Anti-IBV HA	IgG	CABT-NS1555
	Human Anti-IBV HA	IgM	CABT-NS1556
EBV	Human Anti-EBV gH/gL	IgG	CABT-NS1587
	Human Anti-EBV gH/gL	IgM	CABT-NS1588

Zoonotic Infectious Diseases Antibodies

Hendra Virus	Human Anti-Hendra Virus Fusion Glycoprotein	IgG	CABT-NS1591
	Human Anti-Hendra Virus Fusion Glycoprotein	IgM	CABT-NS1592
Nipah Virus	Human Anti-Nipah Virus Fusion Glycoprotein	IgG	CABT-NS1593
	Human Anti-Nipah Virus Fusion Glycoprotein	IgM	CABT-NS1594

Product List

Targets	Product Name	Antibody Isotype	Catalogue Number
Brucella LPS	Human Anti-Brucella LPS	IgG	CABT-NS1612
	Human Anti-Brucella LPS	IgM	CABT-NS1613
Rabies Virus	Human Anti-Rabies Virus G Protein	IgG	CABT-NS1557
	Human Anti-Rabies Virus G Protein	IgM	CABT-NS1558
TOXO	Human Anti-TOXO SAG1	IgG	CABT-NS1589
	Human Anti-TOXO SAG1	IgM	CABT-NS1590

Allergen Antibodies

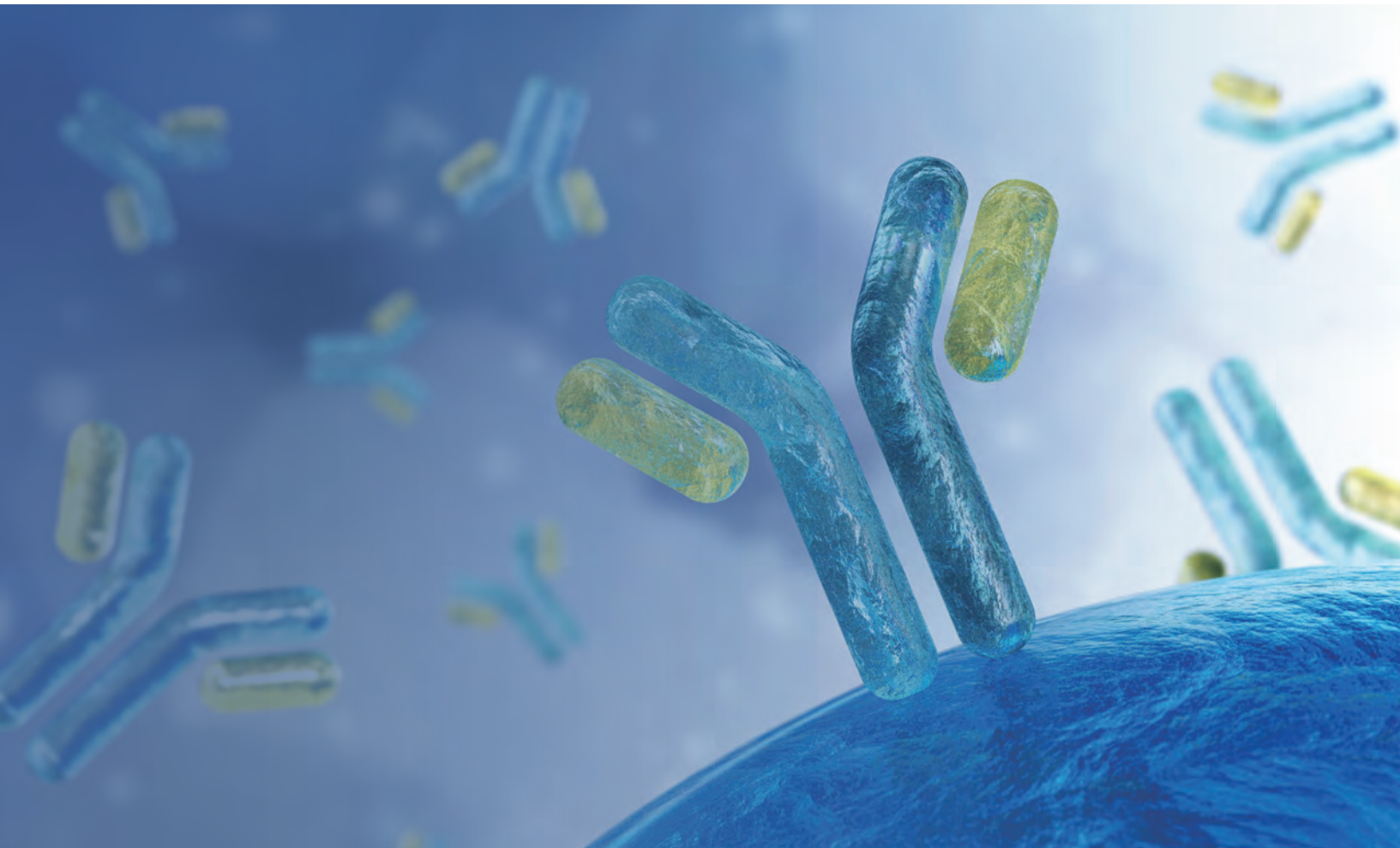
Fel d1	Human Anti-Fel d1	IgE	CABT-YN1427
Ara h1	Human Anti-Ara h1	IgE	CABT-YN1428
Bos d5	Human Anti-Bos d5	IgE	CABT-YN1429
Gal d4	Human Anti-Gal d4	IgE	CABT-YN1430
Der p1	Human Anti-Der p1	IgE	CABT-YN1431
Der p2	Human Anti-Der p2	IgE	CABT-YN1432
Der f1	Human Anti-Der f1	IgE	CABT-YN1433
Bla g1	Human Anti-Bla g1	IgE	CABT-YN1434
Bla g2	Human Anti-Bla g2	IgE	CABT-YN1435
Api m2	Human Anti-Api m2	IgE	CABT-YN1436
Phl p2	Human Anti-Phl p2	IgE	CABT-YN1437
Bet v1	Human Anti-Bet v1	IgE	CABT-YN1438
Ara h2	Human Anti-Ara h2	IgE	CABT-YN1439
Ara h3	Human Anti-Ara h3	IgE	CABT-YN1440
Ara h6	Human Anti-Ara h6	IgE	CABT-YN1441
Phl p7	Human Anti-Phl p7	IgE	CABT-YN1442

Product List

Targets	Product Name	Antibody Isotype	Catalogue Number
Others			
IgG1 kappa	Human IgG1 kappa isotype control	IgG1, κ	CABT-L6098
IgG1 lambda	Human IgG1 lambda isotype control	IgG1, λ	CABT-L6099
IgG1	Human IgG1 isotype control	IgG1	CABT-L6100
IgM	Human IgM isotype control	IgM	CABT-L6101
IgE	Human IgE isotype control	IgE	CABT-L6102
TPO	Human Anti-Human TPO	IgG	CABT-L6103
P53	Human Anti-Human P53	IgG	CABT-L6104
MAGE-A1	Human Anti-Human MAGE-A1	IgG	CABT-L6105
Sperm/SAGA-1	Human Anti-Human sperm/SAGA-1	IgG	CABT-L6106
TG	Human Anti-Human TG	IgG	CABT-L6107
EPO	Human Anti-Human EPO	IgG	CABT-L6008

CREATIVE DIAGNOSTICS

Humanized Monoclonal Antibodies



Contact Us:

Tel: 1-631-624-4882 (USA) / 44-161-818-6441 (Europe)

Fax: 1-631-938-8221

Email: info@creative-diagnostics.com

www.creative-diagnostics.com

CD Creative Diagnostics®