

M. tuberculosis Antibodies and Antigens

Tuberculosis (TB) is the leading infectious killer, with an estimated one-quarter of the world's population testing positive for *M. tuberculosis*. Early and accurate detection is essential to effectively manage and control the spread of this highly contagious disease. Creative Diagnostics offers a selection of top-quality *M. tuberculosis* antibodies and antigens. Developed using advanced biotechnology platforms, our products exhibit excellent sensitivity and specificity in the detection of *M. tuberculosis*. We rigorously test and validate our products to ensure they meet the highest standards of efficacy and reproducibility. In addition, our dedicated team of experts provides unparalleled technical support and guidance throughout the process.

M. tuberculosis Antibodies

Creative Diagnostics provides highly sensitive antibodies against different specific antigens of *M. tuberculosis*. These antibodies are suitable for common immunoassays such as direct and indirect ELISA, sandwich immunoassays and Western Blot. These immunoassays play a crucial role in the research, diagnosis, and monitoring of TB infection and can provide valuable information regarding the immune response to *M. tuberculosis*.

Western blot analysis of *M. tuberculosis* antibodies

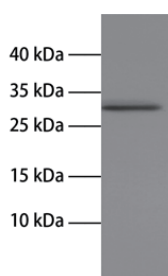


Fig. 1 Anti-*M. tuberculosis* Rv0815c Pab (#CABT-CS685)

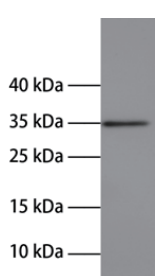


Fig. 1 Anti-*M. tuberculosis* Rv0815c Pab (#CABT-CS685)

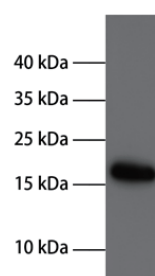


Fig. 1 Anti-*M. tuberculosis* Rv0815c Pab (#CABT-CS685)

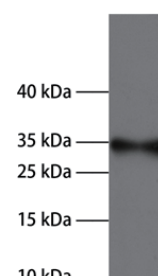


Fig. 1 Anti-*M. tuberculosis* Rv0815c Pab (#CABT-CS685)

M. tuberculosis Antibodies and Antigens

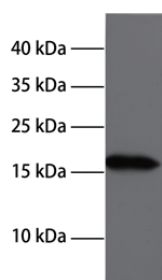


Fig. 5 Anti-M. tuberculosis Mpt70 (Rv2875) Pab (#CABT-CS691)

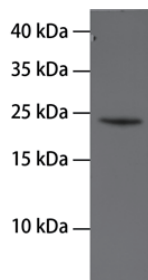


Fig. 6 Anti-M. tuberculosis Rv3676 Pab (#CABT-CS692)

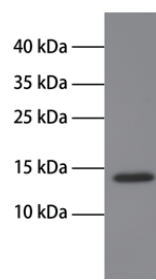


Fig. 7 Anti-M. tuberculosis Rv3849 Pab (#CABT-CS693)

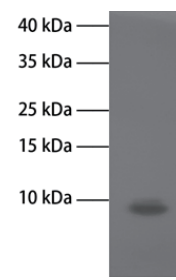


Fig. 8 Anti-M. tuberculosis PE35 (Rv3872) Pab (#CABT-CS694)

Recommended Western Blot Antibody Dilutions: 1:600- 1:1,000

Product List

Cat. No	Product Name	Host	Applications
DCABY-4659	Anti-M. tuberculosis CFP-10 Mab, clone N29723UC2	Mouse	ELISA (Capture)
DCABY-4660	Anti-M. tuberculosis CFP-10 Mab, clone N29723UC3	Mouse	ELISA (Detection)
DMAB3943	Anti-M. tuberculosis CFP-10 Mab, Clone C392M	Mouse	ELISA
DMAB3941	Anti-M. tuberculosis CFP-10 Mab, Clone C387M	Mouse	ELISA
CABT-CS695	Anti-M. tuberculosis CFP-10 (Rv3874) Pab	Mouse	ELISA, WB
DMABT-51441MM	Anti-M. tuberculosis 16kDa Mab, Clone 6286	Mouse	ELISA, WB
DMAB3963	Anti-M. tuberculosis 16kDa Mab, Clone CDI558	Mouse	ELISA, WB
DMAB3964	Anti-M. tuberculosis 16kDa Mab, Clone CDI568	Mouse	ELISA, WB
DMAB3970	Anti-M. tuberculosis 38kDa (Rv0934) Mab, Clone ITM83	Mouse	ELISA, WB
CABT-CS686	Anti-M. tuberculosis 38kDa (Rv0934) Pab	Mouse	ELISA, WB
DMABH-006	Anti-M. tuberculosis Rv3134 Mab, clone E6	Mouse	ELISA, WB
DMAB3971	Anti-M. tuberculosis HSP65 Mab, Clone CDI578	Mouse	ELISA, WB
DMAB3972	Anti-M. tuberculosis HSP65 Mab, Clone CDI579	Mouse	ELISA, WB
DPATB-H83149	Anti-M. tuberculosis Pab	Rabbit	IHC-P,IHC-Fr
DPATB-H82502	Anti-M. tuberculosis Ag85B Pab	Rabbit	ELISA, WB
CABT-CS047	Anti-M. tuberculosis ESAT-6 Pab	Rabbit	IHC-P, IF
CPBT-B1491	Anti-M. tuberculosis Mpt64 Pab	Rabbit	ELISA, WB
CABT-CS685	Anti-M. tuberculosis Rv0815c Pab	Mouse	ELISA, WB

M. tuberculosis Antibodies and Antigens

Cat. No	Product Name	Host	Applications
CABT-CS687	Anti-M. tuberculosis Rv1804c Pab	Mouse	ELISA, WB
CABT-CS688	Anti-M. tuberculosis CFP21 (Rv1984c) Pab	Mouse	ELISA, WB
CABT-CS689	Anti-M. tuberculosis Rv2078 Pab	Mouse	ELISA, WB
CABT-CS690	Anti-M. tuberculosis Rv2837 Pab	Mouse	ELISA, WB
CABT-CS691	Anti-M. tuberculosis Mpt70 (Rv2875) Pab	Mouse	ELISA, WB
CABT-CS692	Anti-M. tuberculosis Rv3676 Pab	Mouse	ELISA, WB
CABT-CS693	Anti-M. tuberculosis Rv3849 Pab	Mouse	ELISA, WB
CABT-CS694	Anti-M. tuberculosis PE35 (Rv3872) Pab	Mouse	ELISA, WB

M. tuberculosis Antigens

M. tuberculosis antigens are used in various applications, primarily in the diagnosis, detection, and research of tuberculosis infection. Some of the applications of *M. tuberculosis* antigens include:

Diagnostic tests: Can be used in diagnostic tests such as interferon-gamma release assays (IGRAs)

Vaccine development: Understanding the role of specific antigens in the immune response can help design vaccines

Immunoassays: Can be used as target molecules to detect the presence of antibodies against *M. tuberculosis* in blood samples

Immunological research: To understand host-pathogen interactions and the immune response to TB infection

Our advantages

- High purity >95%
- Low exogenous factors
- Low endotoxin <0.1EU/μg
- Excellent lot-to-lot consistency

SDS-PAGE analysis of *M. tuberculosis* antigens

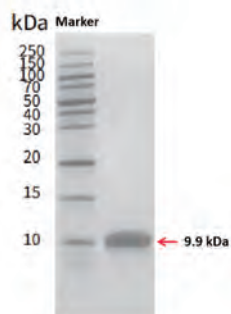


Fig. 9 Recombinant *M. tb* ESAT-6 protein (#DAGH171)

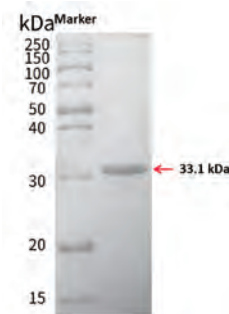


Fig. 10 Recombinant *M. tb* Ag85A protein (#DAGA-181)

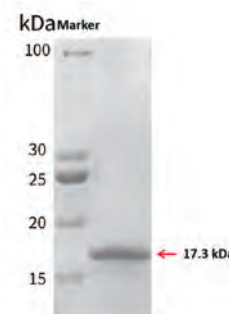


Fig. 11 Recombinant *M. tb* 16kDa (HspX) protein (#DAG-T2449)

M. tuberculosis Antibodies and Antigens

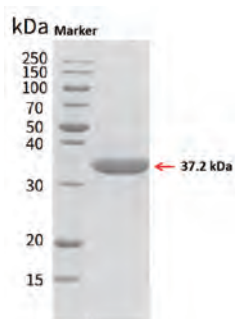


Fig. 12 Recombinant M. tb 38kDa (PstS1) protein (#DAGA-196)

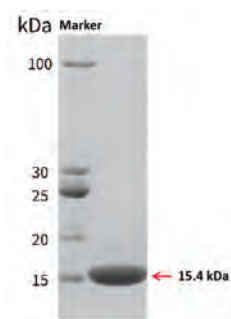


Fig. 13 Recombinant M. tb TB15.3 protein (#DAG-WT724)

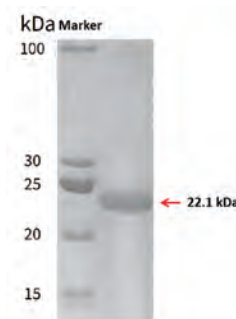


Fig. 14 Recombinant M. tb CFP10-ESAT6 Protein (#DAGA-193)

Product List

Cat. No	Product Name	Expression System	Applications
DAGH171	Recombinant M. tuberculosis ESAT-6 antigen	Escherichia coli	ELISA, LF, WB
DAGA-188	Recombinant M. tuberculosis CFP-10 antigen	Escherichia coli	ELISA, LF, WB
DAGA-193	Recombinant M. tuberculosis CFP10-ESAT6 antigen	Escherichia coli	ELISA, LF, WB
DAG-T2449	Recombinant M. tuberculosis HSP16.3 (HspX) antigen	Escherichia coli	ELISA, LF, WB
DAG559	Recombinant M. tuberculosis HSP65 (groEL2) antigen	Escherichia coli	ELISA, LF, WB
DAG560	Recombinant M. tuberculosis HSP70 (DnaK) antigen	Escherichia coli	ELISA, LF, WB
DAGA-196	Recombinant M. tuberculosis 38kDa (PstS1) antigen	Escherichia coli	ELISA, LF, WB
DAGA-180	Recombinant M. tuberculosis Mpt63 antigen	Escherichia coli	ELISA, LF, WB
DAGA-184	Recombinant M. tuberculosis Mpt64 antigen	Escherichia coli	ELISA, LF, WB
DAGA-182	Recombinant M. tuberculosis Mpt70 antigen	Escherichia coli	ELISA, LF, WB
DAGA-183	Recombinant M. tuberculosis Mpt83 antigen	Escherichia coli	ELISA, LF, WB
DAGA-209	Recombinant M. tuberculosis Mtb81 (GlcB) antigen	Escherichia coli	ELISA, LF, WB
DAGA-199	Recombinant M. tuberculosis 19kDa Lipoprotein (LpqH)	Escherichia coli	ELISA, LF, WB
DAGA-181	Recombinant M. tuberculosis Ag85A antigen	Escherichia coli	ELISA, LF, WB
DAGA-185	Recombinant M. tuberculosis Ag85B antigen	Escherichia coli	ELISA, LF, WB
DAGA-175	Recombinant M. tuberculosis Ag85C antigen	Escherichia coli	ELISA, LF, WB
DAG-WT724	Recombinant M. tuberculosis TB15.3 antigen	Escherichia coli	ELISA, LF, WB
DAG-WT725	Recombinant M. tuberculosis Rv0140 antigen	Escherichia coli	ELISA, LF, WB

M. tuberculosis Antibodies and Antigens

Cat. No	Product Name	Expression System	Applications
DAG-WT726	Recombinant M. tuberculosis Mce1B antigen	Escherichia coli	ELISA, LF, WB
DAG-WT727	Recombinant M. tuberculosis EsxG antigen	Escherichia coli	ELISA, LF, WB
DAG-WT728	Recombinant M. tuberculosis EsxL antigen	Escherichia coli	ELISA, LF, WB
DAG-WT729	Recombinant M. tuberculosis Rv1887 antigen	Escherichia coli	ELISA, LF, WB
DAG-WT730	Recombinant M. tuberculosis PE_PGRS35 antigen	Escherichia coli	ELISA, LF, WB
DAG-WT731	Recombinant M. tuberculosis PPE57 antigen	Escherichia coli	ELISA, LF, WB
DAG-WT732	Recombinant M. tuberculosis Rv3491 antigen	Escherichia coli	ELISA, LF, WB
DAG-WT733	Recombinant M. tuberculosis Rv3671c antigen	Escherichia coli	ELISA, LF, WB
DAG-WT734	Recombinant M. tuberculosis PE35 antigen	Escherichia coli	ELISA, LF, WB
DAG-WT735	Recombinant M. tuberculosis PPE68 antigen	Escherichia coli	ELISA, LF, WB
DAG-WT736	Recombinant M. tuberculosis TB16.3 antigen	Escherichia coli	ELISA, LF, WB
DAG-WT737	Recombinant M. tuberculosis Rv0133 antigen	Escherichia coli	ELISA, LF, WB
DAG-WT738	Recombinant M. tuberculosis Rv1804c antigen	Escherichia coli	ELISA, LF, WB
DAG-WT739	Recombinant M. tuberculosis Mce3A antigen	Escherichia coli	ELISA, LF, WB
DAG-WT740	Recombinant M. tuberculosis CFP21 antigen	Escherichia coli	ELISA, LF, WB
DAG-WT741	Recombinant M. tuberculosis Rv1987 antigen	Escherichia coli	ELISA, LF, WB
DAG-WT742	Recombinant M. tuberculosis EsxW antigen	Escherichia coli	ELISA, LF, WB
DAG-WT743	Recombinant M. tuberculosis EsxV antigen	Escherichia coli	ELISA, LF, WB
DAG-WT744	Recombinant M. tuberculosis MTB32A antigen	Escherichia coli	ELISA, LF, WB
DAG-WT745	Recombinant M. tuberculosis MTB39A antigen	Escherichia coli	ELISA, LF, WB
DAG-WT748	Recombinant M. tuberculosis Rv2078 antigen	Escherichia coli	ELISA, LF, WB
DAG-WT749	Recombinant M. tuberculosis GroES antigen	Escherichia coli	ELISA, LF, WB
DAG-WT750	Recombinant M. tuberculosis Rv1087A antigen	Escherichia coli	ELISA, LF, WB
DAG-WT1187	Recombinant M. tuberculosis Ag85B	Pichia pastoris	ELISA, LF, WB
DAG-WT1188	Recombinant M. tuberculosis 38kD	Pichia pastoris	ELISA, LF, WB
DAG-WT1189	Recombinant M. tuberculosis Mpt64	Pichia pastoris	ELISA, LF, WB
DAGA-168	Native M. tuberculosis LAM	M. tuberculosis	ELISA, LF, CLIA
DAG2684	M. tuberculosis Tuberculin PPD	M. tuberculosis	-

CREATIVE DIAGNOSTICS

M. tuberculosis Antibodies and Antigens



Contact Us:

Tel: 1-631-624-4882 (USA) / 44-161-818-6441 (Europe)

Fax: 1-631-938-8221

Email: info@creative-diagnostics.com

www.creative-diagnostics.com

CD Creative Diagnostics®